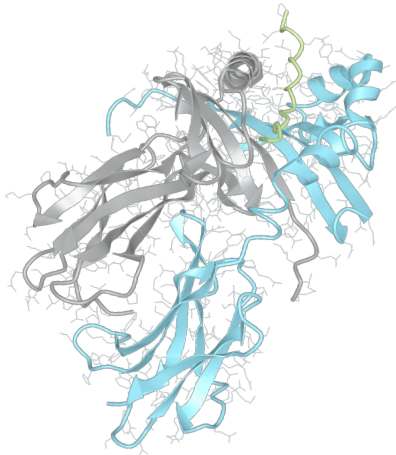


Product datasheet



sHLA– DQB1*05:01bio DQA1*01:02bio

DQB1*0501, DQB10501, DQB1*05, DQB05, DQ5
DQA1*0102, DQA10102, DQA1*01, DQA01

Serological Name	DQ5
Peptide Load	Endogenous
Modification	Unmodified
Conjugation	Biotin
SKU	DQB10501/DQA10102bio

Product Description

Allele Name	DQA1*01:02 DQB1*05:01
HLA Class	HLA Class II
HLA Gene Locus	HLA-DQ
Alternative Allele Name A Chain	DQA1*0102, DQA10102, DQA1*01, DQA01
Alternative Allele Name B Chain	DQB1*0501, DQB10501, DQB1*05, DQB05, DQ5
Description	Recombinant, truncated Class II soluble Human Leukocyte Antigen (sHLA), naturally folded and glycosylated, loaded with endogenous peptides.
Serological Name	DQ5
Serological Split	DQ1
Allele Frequency [World Population]	
A chain	15.0%
B chain	8.9%

Associated products

[DQB10501/DQA10102](#)
[DQB10501/DQA10102pe](#)

Product Specification

Product name	HLA-DQB1*05:01/DQA1*01:02bio
HLA Species	Human
Host Cell Line Species	Mouse
Clone Designation	
Tail Specification	ZP
Peptide Load	Endogenous
Modification	Unmodified
Conjugation	Biotin
Complexity	Monomer
Protein Format	Recombinant, truncated, zipper-stabilized, soluble, non-modified, biotinylated, endogenously loaded
Storage Temperature	4°C (This product should be stored undiluted)
Form	Liquid
Concentration	300.0 µg/µl
Formulation	PBS/0.02% Sodium Azide
pH	7.4
Purification Method	Affinity Chromatography
Grade	Research Use Only [RUO]
Authentication Verification	Sequence Based Typing

Protein Sequences

Alpha Chain Sequence	EDIVADHVAS CGVNLYQFYG PSGQYTHEFD GDEQFYVDLE RKETAWRWPE FSKFGGFDPQ GALRNMVAEK HNLNIMIKRY NSTAATNEVP ETVVFSKSPV TLGQPNTLIC LVDNIFPPVV NITWLSNGQS VTEGVSETSF LSKSDHSFFK ISYLTFLPSA DEIYDCKVEH WGLDQPLLKH WEPEIPAPMS EVDGGGGGAQ LEKELQALEK ENAQLEWELQ ALEKELAQ
Beta Chain Sequence	RDSPEDFVYQ FKGLCYFTNG TERVRGVTRH IYNREEYVRF DSDVGVYRAV TPQGRPVAEY WNSQKEVLEG ARASVDRVCR HNYEVAYRGI LQRRVEPTVT ISPSRTEALN HHNLLICSVT DFYPSQIKVR WFRNDQEETA GVVSTPLIRN GDWTFQILVM LEMTPQRGDV YTCHVEHPSL QSPTTVEWRA QSESAQSKVD GGGGAQLKK KLQALKKKNA QLKWKLQALK KKLAAQ

Related Products

[DQB10502/DQA10102bio](#)
[DQB10503/DQA10102bio](#)
[DQB10301/DQA10201bio](#)
[DQB10602/DQA10102bio](#)

Applications

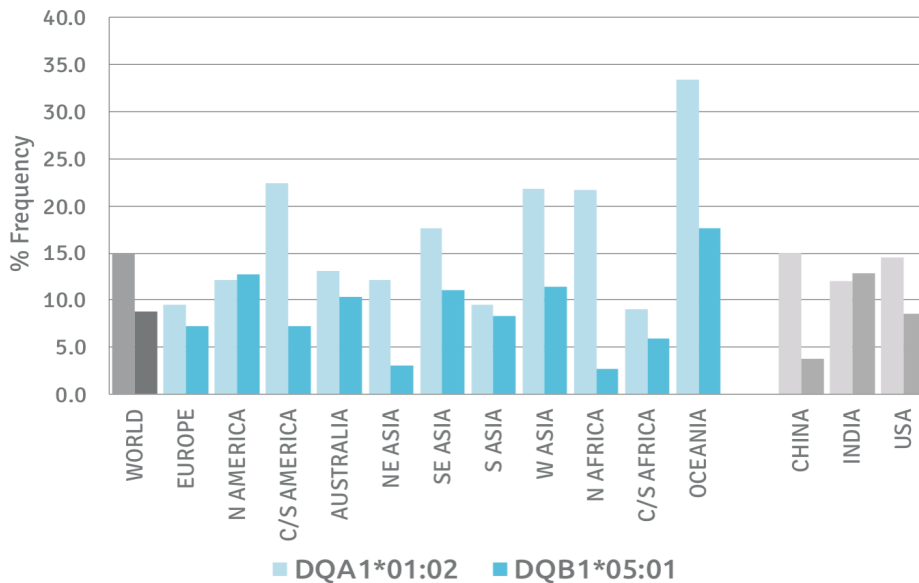
HLA Sandwich ELISAs
 HLA Direct ELISAs
 HLA-Sera Antibody Assays
 HLA Controls in ELISA Assays
 HLA Assay Standards
 HLA Blocking Assays
 HLA Neutralizing Assays
 HLA Competition Assays
 HLA Bead Assays
 HLA Immunization Procedures

Recommended Antibodies

-

Allele Frequency

Worldwide Allele Frequency



Please note:

ALL PRODUCTS ARE FOR RESEARCH USE ONLY. NOT FOR COMMERCIAL USE IN DIAGNOSTIC PROCEDURES.
 For more information, please visit our Policies section on our website. For licensing inquiries, please contact

licensing@hlaprotein.com

HLA Protein
 PURE PROTEIN LLC

Eplet Assignments

DQB1*05:01

Eplet	Polymorphic Residues	Antibody Reactivity
3S	3S	
9Y	9Y	
23R	23R	
30H	30H	
37YV	37Y38V	
45G	45G	
45GV	45G46V	Yes
46VY	46V 52P 28T	Yes
52PQ	53Q 89G 90I	Yes
55R	55R	Yes
56P	56P	
57V	57V	Yes
66EV	66E67V	
67VG	66E67V70G	
74S	74S 26G	Yes
75V	75V	
77R	75V77R	Yes
86A	86A	
87Y	87Y	Yes
116I	116I 125S	Yes
125SQ	125S126Q	Yes
130R	130R	
135D	135D	
167R	167R	
182S	182S	Yes
185T	185T	

Eplet Assignments

DQA1*01:02

Eplet	Polymorphic Residues	Antibody Reactivity
2D	2D 199A	Yes
25YT	25Y26T	
40E	40E	Yes
52SK	52S 53K 11C 18F 45A 64R 66M 69A 80Y	Yes
75I	75I 161D 163I	
129QS	129Q130S	
160A	160A	
160AD	160A161D	

